

*American
Natural Resources, Inc.*



Fine Antler Products

Antler Chandeliers



Aurora Borealis
Elk two tier chandelier
48" diameter/45" high/8-10 lights



Niagra
Three tier chandelier
44" diameter/44" high/14 lights



Fallow Deer Chandelier
38-44" diameter/24-28" high/5-6 lights

Moose Chandelier
38-45" diameter/38-45" high
Shown with downlight



Northern Highlands
Four Moose paddles
Subtle Moose bloom
42" diameter/40" high/8-12 lights





The Chief - Mule Deer

Two tier chandelier
38" diameter/38" high/10 lights



Eagle Dance

Mule or Whitetail Deer with decorative bloom
32" diameter/20" high/8 lights

Tamarack - Whitetail

Available with four, five, or six lights
25" diameter/16" high



Straight Arrow

Oval chandelier for pool table or bar
3 individually switched down lights
30" wide/60" long/36" high/11 lights



The Chief - Whitetail

Two tier chandelier
32-36" diameter/32-36" high/14 lights



Tamarack - Mule Deer

Available with four, five, or six lights
28" diameter/16" high



Antler Chandeliers



The Cage

Variety of antlers available
10-16" diameter/16" high

Cabin Fever

Whitetail and Mule deer available
20" diameter/6" deep/3 or 5 lights



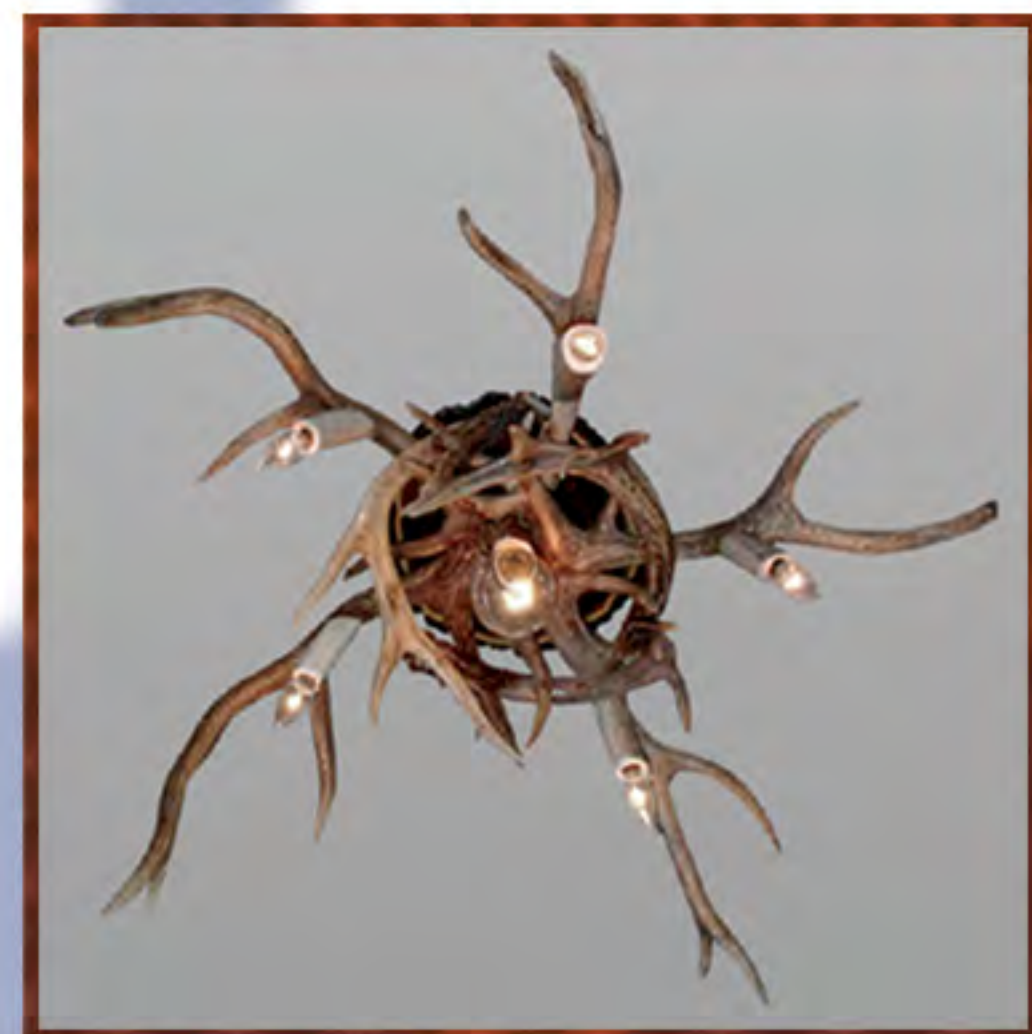
Two Light Whitetail Chandelier

8" diameter/13" high



Caribou Chandelier

65-75" diameter/60-65" high/8-10 lights



Six Light Ceiling Fixture

36" diameter



Isle Royale

Sweeping oval chandelier
29" wide/47" long/25" high
8 lights

Antler Furnishings



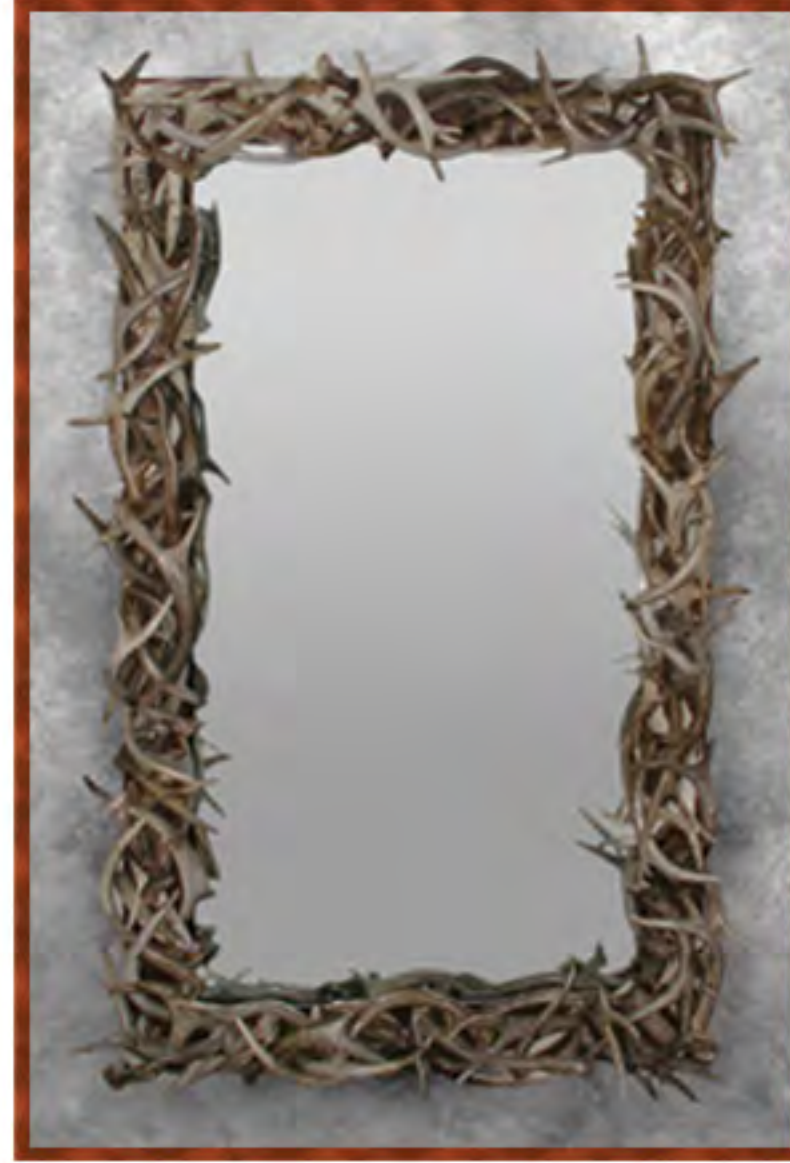
Elk Bar Stool

Leather or suede
Many colors available
26"wide/48"high/22"deep



Oval Whitetail Mirror

20"wide/32"high



Square Whitetail Mirror

20"wide/32"high

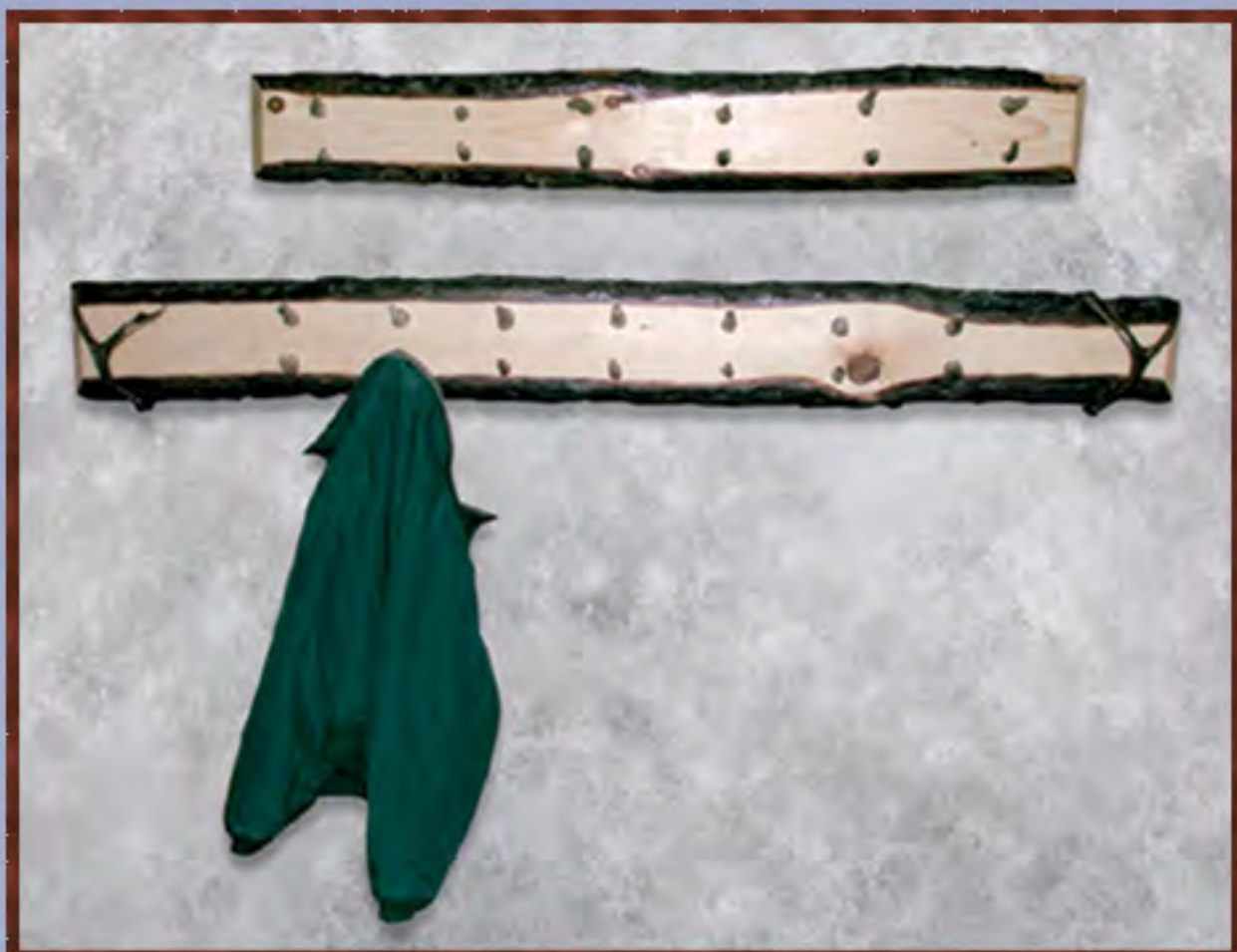


Fallow Mirror

20"wide/32"high

Coat Rack

Sizes vary



Elk and Fallow Deer Bench

Pine slabs
App. 66"long/36"high



Antler Candle holders and Wall Sconces



Votive Candle Holders



Candle Centerpiece
22" diameter / 12" high / 12 holders

One Antler Candle Holders



Two Antler
Candle Holder

Towering Candelabra 18-24" high





Wall Candle
3-6"wide/6"high/5-6"deep

Candle Wall Sconces

Natural Wood Back
Available as singles or matched pairs



Electric Wall Sconces



Elegant Wall Sconce
24"wide/42"high/14"deep



Electric Wall Sconces
Natural Wood Back
Available as singles or matched pairs



Moose Wall Sconce

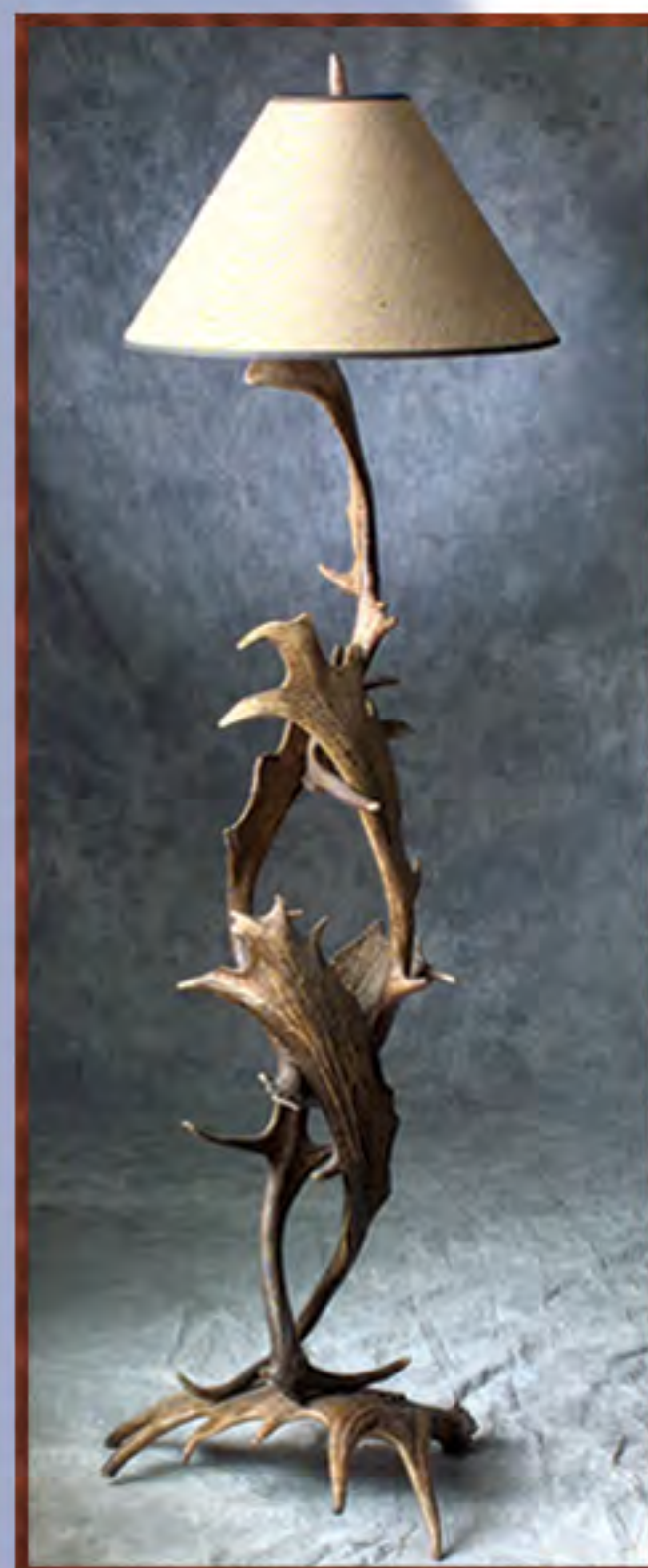


Antler Lamps



**Elk and Moose
Floor Lamp**
w/Black Butternut
Shelf
App. 6' high with harp
(Shade not included)

Moose Floor Lamp
App. 6' high with harp
(Shade not included)



**Fallow Deer
Floor Lamp**
App. 6' high with harp
(Shade not included)

**Three Antler
Table Lamp**
App. 34" high with harp
(Shade not included)



**Elk and Moose
Floor Lamp**
App. 6' high with harp
(Shade not included)

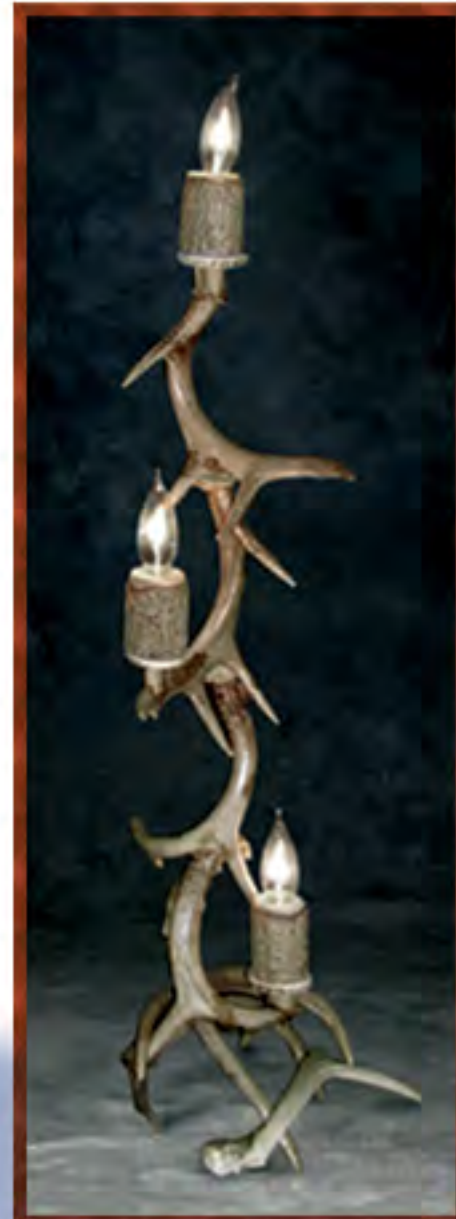


**Fallow
Desk Lamp**
24"high

**Free Standing
Moose Table Lamp**
App. 40"high with harp
(Shade not included)



**Hand Carved
Bear Lamp**



**Candlestick
Lamp**
24-30"high



**Two Antler
Table Lamp**
Available in singles or matched pairs
App. 28"high with harp
(Shade not included)

Antler Shelves

**Small
Whitetail
Shelf** **Hand Carved
Bear Sconce**



Fallow Shelf
30-40"wide/8"high/12"deep



Antler Shelves



Hanging Elk and Moose Shelf

Three Butternut slabs
42"wide/56"high/17"deep



Large Bookshelf

Standing shelf unit with
finished natural slabs
56"wide/72"high/15"deep
(Can be built to custom size)

Shelf Units

2 Shelves/25"wide/19"high/17"deep
3 Shelves/25"wide/36"high/17"deep
4 Shelves/25"wide/55"high/17"deep



Butternut and Antler Wall Shelves

36-40"wide/14"high/14"deep
30"wide/6"high/12"deep
(Also shown-
Antler 12 candle holder)

Antler Tables



Moose Tripod Coffee Table
25"high/42 or 48" Round Glass



Sofa Table with Butternut Slab
16"wide/45"long/30"high
Available in a variety of antler types
(Also shown - Antler 7 candle holder)



Moose End Table
22"high/30 or 36" Round Glass



Elk Breakfast Table
29"high/42 or 48" Round Glass



Antler Tables



Elk Coffee Table
20"high/42 or 48" Round Glass

**Square Moose
Coffee Table**
22"high/48" Round Glass



**Elk Table
with Butternut Slab**
25-26"high/30"slab



**Driftwood
Table Lamp**
24-36" high with harp
(Shade not included)

**Driftwood
Floor Lamp**
5-6' high with harp
(Shade not included)



**Driftwood
Mirror**
20" wide / 32" high



**Driftwood
Coffee
Table**
42 or 48" Round Glass



**Driftwood
Chandelier**
4-6' diameter
3-4' high
6-8 lights

Antler Accessories



Pool Cue Rack
30"wide/28"high/13"deep
(Pool cues not included)



Round Basket
20"diameter/20"high



Double Bottle Wine Rack
Fallow base
18-20"wide/8"high



Single Bottle Wine Rack
Fallow base
16-18"wide/8"high

Triple Bottle Wine Rack
Fallow base
20-24"wide/8"high





Fireplace Set and Log Basket

Fireplace Set - App. 3' high

Log Basket - 18"wide/24"long/20"high



Fishing Rod Rack

32"wide/27"high/13"deep

(Fishing rods not included)

Photo Frames

Natural wood slab back



Assorted Hooks



Assorted Pulls

Serving Tray

Butternut slab with
antler accents

12"wide/36"long



- Fine Antler ART Works
- In whitetail, mule deer, fallow, elk, moose and/or caribou antlers
- internally wired; all components UL approved
- specify if chandelier will need to take shades (shades not included)
- prices may vary according to the number and/or size of antlers used

Design your own! We will build to suit virtually any dimension.

Call :1 - 800 - 201 - 2100 or

e - mail : 1-800-201-2100 for any order, design and estimate.

Northern Highland: Four moose paddle with subtler moose bloom - [View Photo](#)

[42" wide, 40" high, 4 lights](#) [\\$ 2,800+](#)

Aurora Borealis: Elk two tier chandelier - [View Photo](#)

[72" wide, 65" high, 14-16 lights](#) [\\$ 5,800](#)

[60" wide, 52" high, 10-14 lights](#) [\\$ 4,800](#)

[48" wide, 40" high, 8-10 lights](#) [\\$ 3,200](#)

Isle Royal: Sweeping oval chandelier - [View Photo](#)

[36" x 24" w/l, 30" high;8-12 lights](#) [\\$ 3,300](#)

[29" x 47" w/l, 25" high;8 lights](#) [\\$ 2,800](#)

The Chief: Deer two tier chandelier

[38" wide, 38" high;10 lights - Mule - View Photo](#) [\\$ 3,200](#)

[32-36" wide, 32-36" high;9 lights - Whitetail - View Photo](#) [\\$ 2,200](#)

Cabin Fever: Ceiling unit lighting fixture in Whitetail

[20"wide, 6" deep; 5 lights](#) [\\$ 300](#)

[16-18" wide, 5 " deep;3 lights](#) [\\$ 260](#)

Tamarack: Mule or Whitetail Deer chandelier - [View Photo](#)

[Extra Large - Extra Heavy Whitetail Chandelier](#) [\\$ 1,590](#)

[25-30" wide, 16" high; 6 lights](#) [\\$ 1,370](#)

[25" wide, 16" high; 5 lights](#) [\\$ 1,170](#)

[Large 4 lights trophy Whitetail or Mule Deer](#) [\\$ 1,050](#)

[Small 4 lights \(Whitetail only\)](#) [\\$ 950](#)

Niagara: Three tier chandelier - View Photo

54" wide, 54" high; 14 lights \$ 4,800

44" wide, 44" high; 14 lights \$ 3,600

Straight Arrow: For pool table/bar, with individually switched down lights

30-36" x 44"w/l, 36" high; 8 lights with 3 down lights \$ 3,600

Fallow Deer Chandelier:

38-44" wide, 24-28" high

Large 6 lights \$ 1,570

Large 5 lights \$ 1,370

Medium 6 lights \$ 1,370

Medium 5 lights \$ 950

Eagle Dance: Mule or Whitetail Deer with decorative bloom chandelier

32" wide, 20" high; 8 lights \$ 1,780

28" wide, 18" high; 7 lights \$ 1,580

Moose Chandelier:

38-45" wide, 38-45" high \$ 3,600

Candle Wall Sconces - View Photo

Available with an oval or round natural wood back, designed for tapers
Sold as singles or matched pairs

Triple: three antlers, three lights

12" wide, 14" long, 12 deep \$ 190

Double: two antlers, two lights

10" wide, 12" long, 10 deep \$ 150

Single: one antler, one light

6" wide, 12" long, 6-10" deep \$ 110

Antler Candle Holder

Our candle holders incorporate an antler piece to hold tapered candles

Antler Candle Holder: - View Photo

Whitetail 12 candle centerpiece \$ 450

Mantle piece antler candelabra:

10" wide, 36" long; 12 holders \$ 450

7" wide, 24" long; 7 holders \$ 270

Towering candelabra:

4 candle holder \$ 190

Two antlers grouped into one piece:

3 candle holder \$ 170

One Antler candle holders:

3 candle holders \$ 90

2 candle holders \$ 70

1 candle holder \$ 50

1 votive candle holder \$ 50

Electric Wall Sconce

- internally wired; all components UL approved
- available without back, or in an oval or round natural wood back
- sold as singles or matched pairs
- specify if sconce should take shades (shades not included)

Electric Wall Sconce: Incorporating many different types of antlers

24" wide, 42" long, 14" deep; 3-5 lights \$ 1,000

Triple: three antlers, three lights

12" wide, 14" long, 12 deep \$ 280

Double: two antlers, two lights

10" wide, 12" long, 10 deep \$ 220

Single: one antler, one light

6" wide, 12" long, 6-10" deep \$ 160

Single: one antler

Moose \$ 240

Antler Tables

- in whitetail, mule deer, elk, moose and/or caribou antlers
- glass top included
- prices may vary according to the dimension and weight of antlers used

Elk End/Coffee Table: - View Photo

48" or 42" Round glass \$ 1,500+

Moose End Table:

30-36" Round glass \$ 1,500

Square Moose Coffee Table: - View Photo

48" Round glass \$ 1,900

Moose Tripod Coffee Table: - View Photo

42" Round glass \$ 1,500

48" Round glass \$ 1,900

Available with square glass

Sofa Table with Butternut Slab: - View Photo

16" wide, 45" long, 30" high \$ 1,300

Available in a variety of antler types

Elk Breakfast Table: - View Photo

29" high with 42" or 48" Round glass \$ 2,000+

Antler Lamps

- [internally wired: all components UL approved](#)
- [all lamps include antler finial \(shades not included\)](#)

Three Antler Table Lamp:

[approximately 34" high with harp](#) [\\$ 230](#)

Extra Large Two Antler Table Lamp:

[approximately 31" high with harp](#) [\\$ 210](#)

Two Antler Table Lamp: - View Photo

[approximately 28" high with harp](#) [\\$ 170](#)
[available in single or as a matched pair](#)

Free Standing Moose Table Lamp: - View Photo

[approximately 40" high with harp](#) [\\$ 350-390](#)

Fallow Deer Floor Lamp:

[approximately 6 " high](#) [\\$ 1,300](#)

Moose Floor Lamp:

[approximately 6 " high](#) [\\$ 1,500](#)

Elk and Moose Floor Lamp: with Black Walnut Shelf - View Photo

[approximately 6 " high](#) [\\$ 1,300](#)
[3 Elk Antler Stand - Moose Antler Base](#)

Elk and Moose Floor Lamp: - View Photo

[approximately 6 " high](#) [\\$ 1,100](#)
[2 Elk Antler Stand - Moose Antler Base](#)

Driftwood Products

Driftwood Mirror:

oval - 32" long; 20" wide \$ 300

Floor Lamp:

5-6' \$ 390

Table Lamp:

Medium - 24-36" high \$ 130

Large - 36-42" high \$ 190

Driftwood Chandelier:

4-6' wide; 3-4" high

6 lights \$ 990

8 lights - Large \$ 1,190

Driftwood Coffee Table:

42-48" Round Glass \$ 1,390

Driftwood Wall Sconces:

Single 1 Light Wall Sconce \$ 80

Double 2Light Wall Sconce \$ 110

Triple 3 Light Wall Sconce \$ 140

Driftwood Candle Holders:

One Candle—Candle Holder \$ 30

Two Candle—Candle Holder \$ 40

Three Candle—Candle Holder \$ 50

Antler Accessories

- add a rustic elegance to your hearth and home with these fine accent pieces

Photo Frames: antler frame a wood slab photo background - View Photo

8-10" wide, 12" high \$ 170

Fire Place Set: with antler handled tools - View Photo

3" high \$ 250

Antler Log or Magazine Basket:

18" wide, 24 long, 20" high \$ 450

Round Antler Basket: - View Photo

20" wide, 20" high \$ 450

Pool Cue Rack:

Butternut Wood with Elk Supports

30" wide, 28" high (pool cues not included) \$ 580

Hooks: with or without back

Sold by size of item \$ 30& up

Serving Tray:

Pine slab with antlers

36 long, 12" wide

Antler Furnishings

- We can create rustic furniture to suit your personal design

Elk Bar Stool: - View Photo

In leather or suede and choice colors

26" wide; 48" high; 22" deep \$ 2,000

Antler Oval Mirror:

32" high; 20 wide \$ 700

Elk and Fallow Deer Bench:

[Pine Wood](#)

[approximately 66" long; 36 high](#)

[\\$ 2,800](#)

[Antler Shelving](#)

[Hanging Elk and Moose Shelf:](#)

[with three butternut slabs](#)

[42" wide; 56 long; 17" deep](#)

[\\$ 1,900](#)

[Single Butternut and Antler Wall shelves: - View Photo](#)

[Beautifully stained and furnished, bark still attached to edge](#)

[Large - 32" wide; 14" long; 14" deep](#)

[\\$ 270](#)

[Medium - 30" wide; 6" long; 12" deep](#)

[\\$ 190](#)

[Large Bookshelf: - View Photo](#)

[Standing shelf unit, with bark on finished, natural wood slabs](#)

[56" wide; 72" high 15" deep](#)

[\\$ 2,800](#)

[56" wide; 48" high 14" deep](#)

[\\$ 1,800](#)

[Can be built to custom size](#)



OUR PLEDGE

We only use the finest materials available for our line of products. All wiring is done internally so to not take away from the beauty of each creation. The final result is truly breathtaking. We are confident, our antler and product line will exceed your expectation for quality of antler products available anywhere else. Although each is unique, with no two being identical, each truly a one of a kind. Custom design is what we are all about. If you can dream it, we can build it to the size or lighting configuration that meets your needs. I personally look forward to discussing and helping you create your own antler work of art, or any other unique project your considering.....

Dan Lecuyer
lecuyer@earthlink.net

